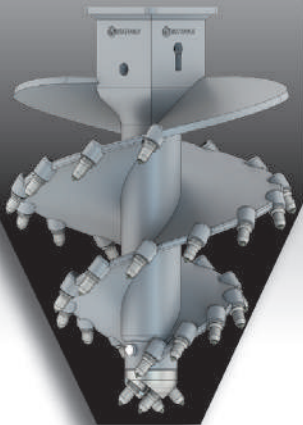
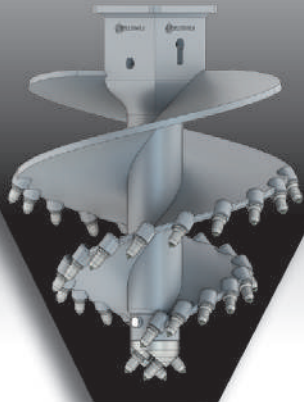


Progressive Stage Rock Augers

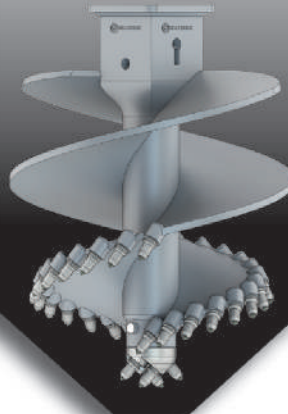
DCDF ST1 ROCK AUGER



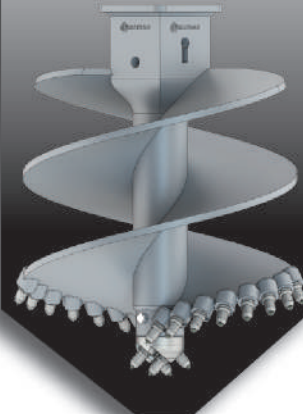
DCDF ST2 ROCK AUGER



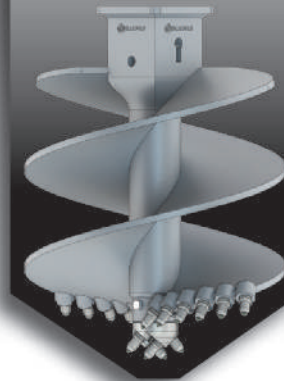
DCDF ST3 ROCK AUGER



DCDF ST4 ROCK AUGER



DCDF ST5 ROCK AUGER



DCDF ST6 ROCK AUGER



STAGE 1
360° Cutting Edge*



STAGE 2
270° Cutting Edge*



STAGE 3
180° Cutting Edge*



STAGE 4
90° Cutting Edge*



STAGE 5
45° Cutting Edge*



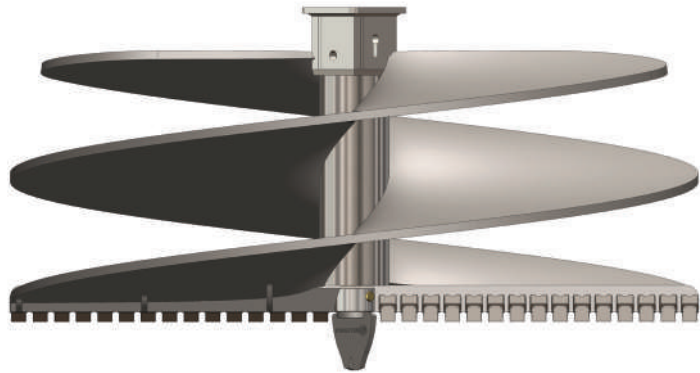
STAGE 6
0° Cutting Edge*

*radius from center to full diameter

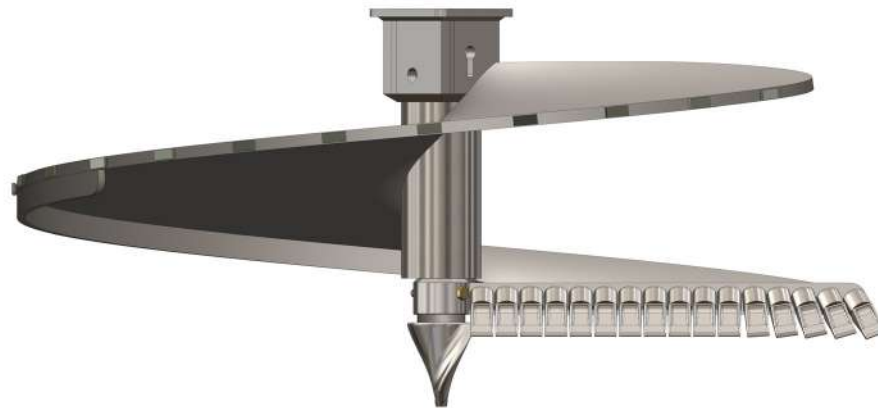
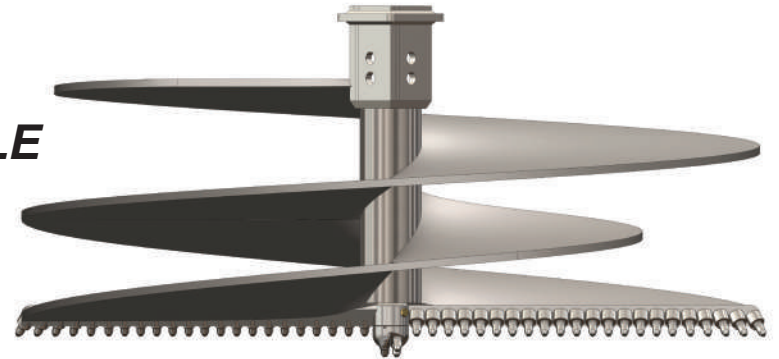


HEAVY DUTY EARTH AUGERS

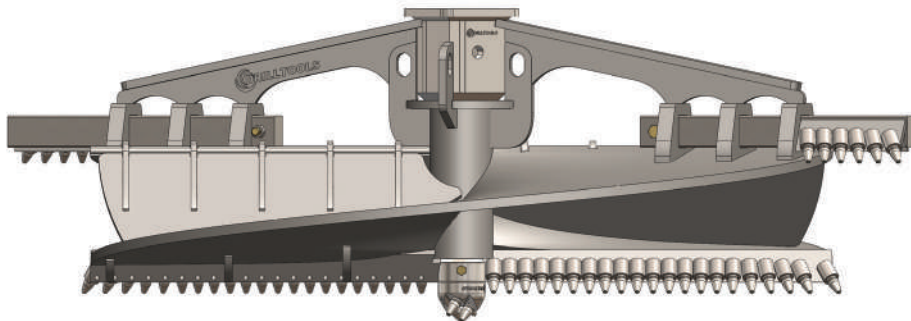
12"-180" Dia.



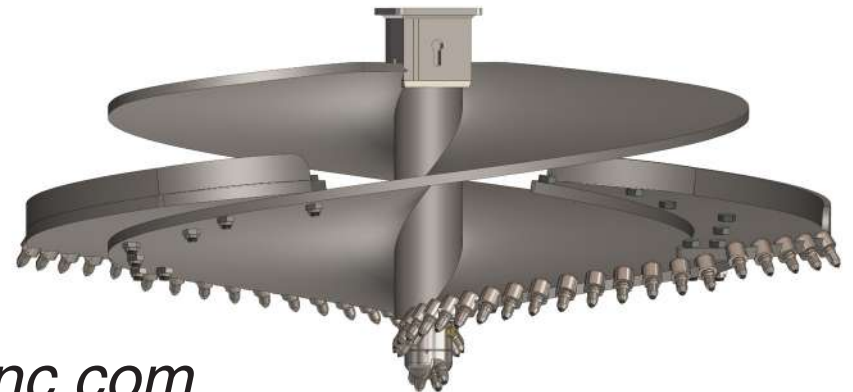
**DOUBLE OR SINGLE
CUT / FLIGHT**



SPOON / VALVE AUGER



PIN / BOLT-ON CUTTERS

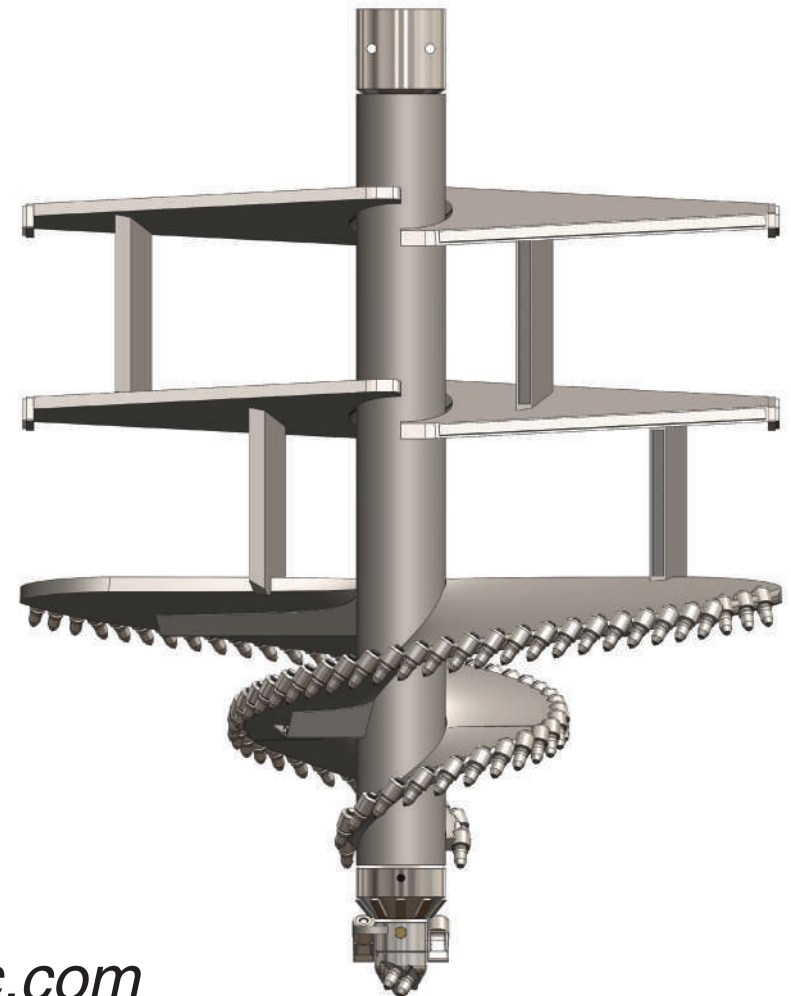


DEEP SOIL MIXING TOOLS

24"-120" Dia.

Blending or Penetrating Style Options

Hex or Spline Type Coupler Options

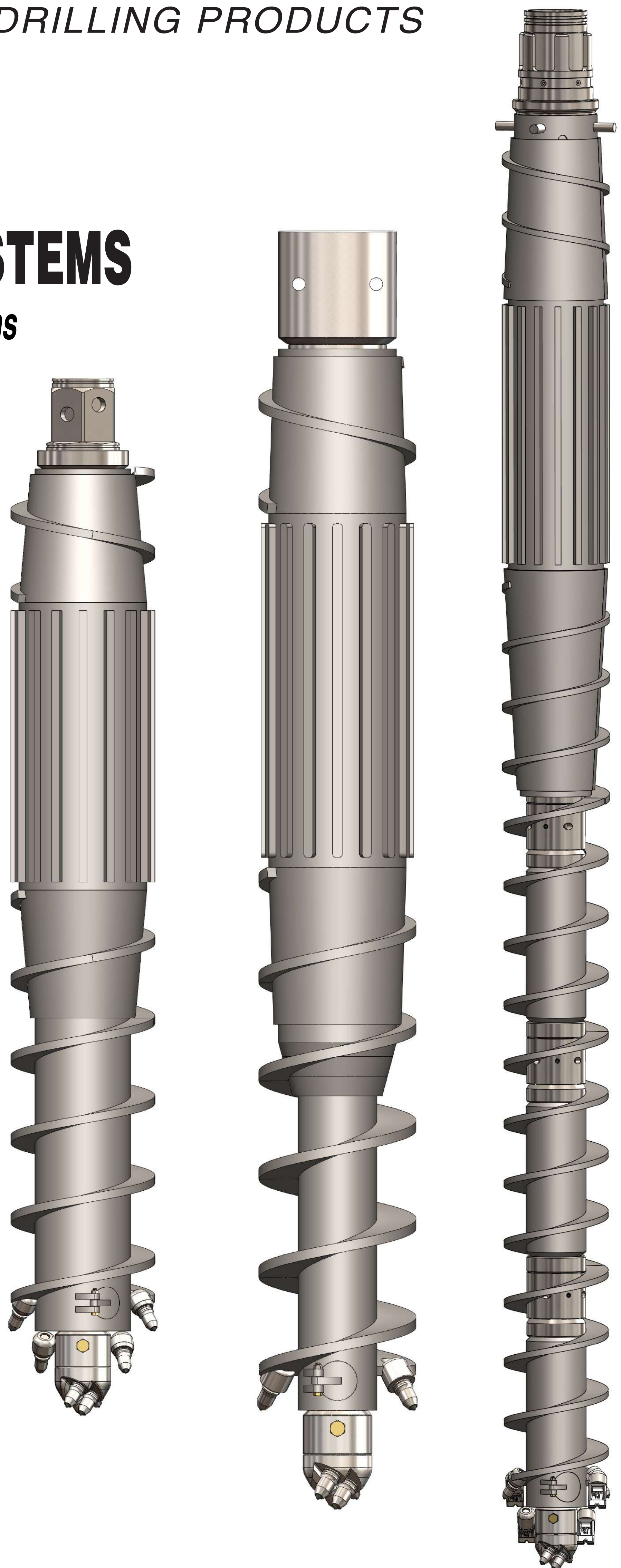




DISPLACEMENT AUGER SYSTEMS

Full & Partial Displacement Auger Systems

- 12"-18" Dia.
- Sectional Starter Heads
- Grout Tube & Discharge Options
- High Strength Drill Stem
- Coupler Options:
 - Hex & Splined
- Full Wear Protection, Hardened Bulb Section

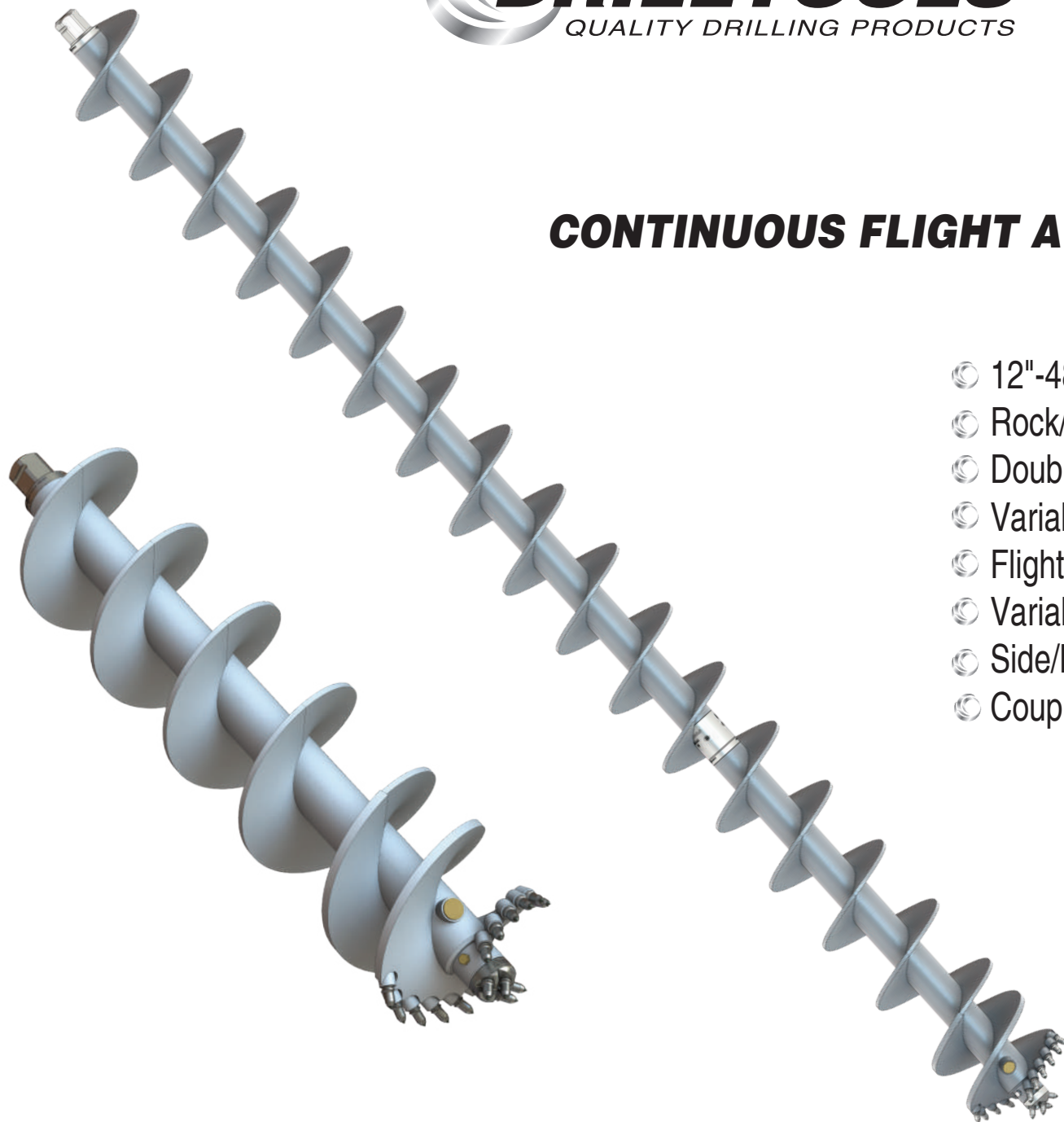


www.drilltoolsinc.com



CFA

CONTINUOUS FLIGHT AUGER SYSTEMS



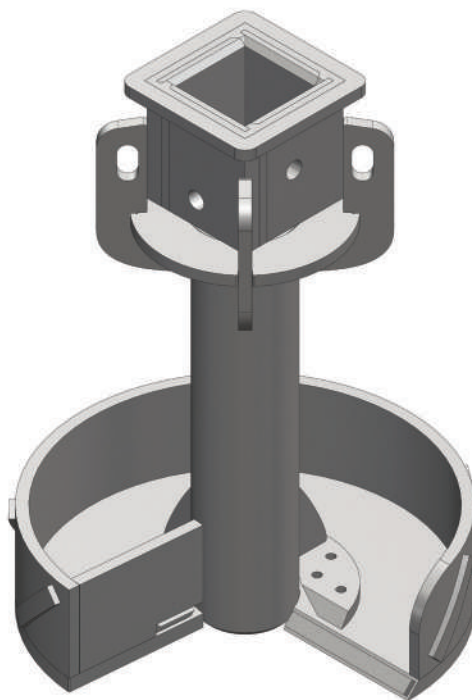
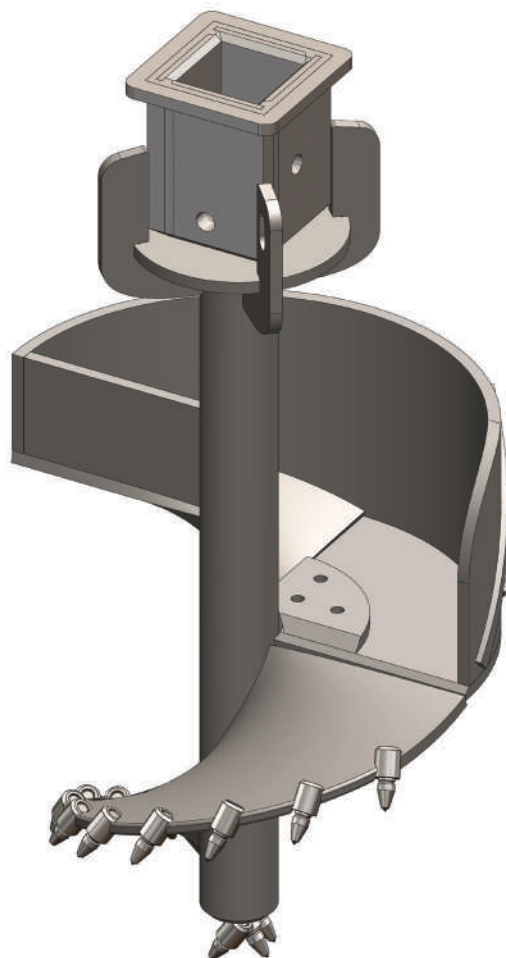
- 12"-48" Dia.
- Rock/Dirt Cutting Heads
- Double Cut/Single Flights
- Variable Flight Pitch
- Flight Body Lengths to 40'
- Variable Size Grout Tubes
- Side/Bottom Grout Port Options
- Coupler Options:
Hex/Splined/Threaded

www.drilltoolsinc.com

ROCK PAN AUGERS

● 18" - 144" Dia.

- Hardened Scraper Edge
- Wear Protected Flat Bottom
- Loading Flight Only
- Progressive Starter Options



DRILLTOOLS™ QUALITY DRILLING PRODUCTS

